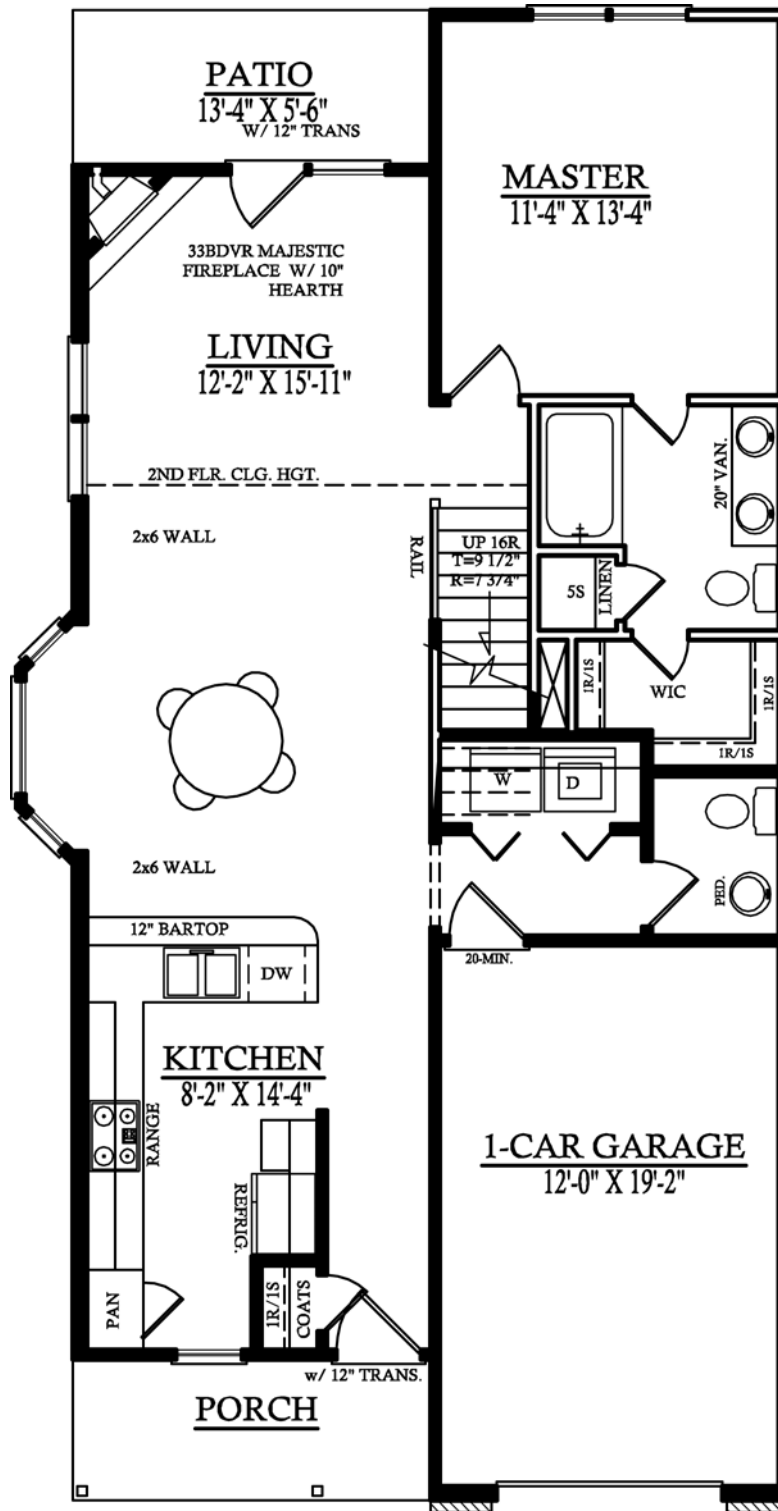


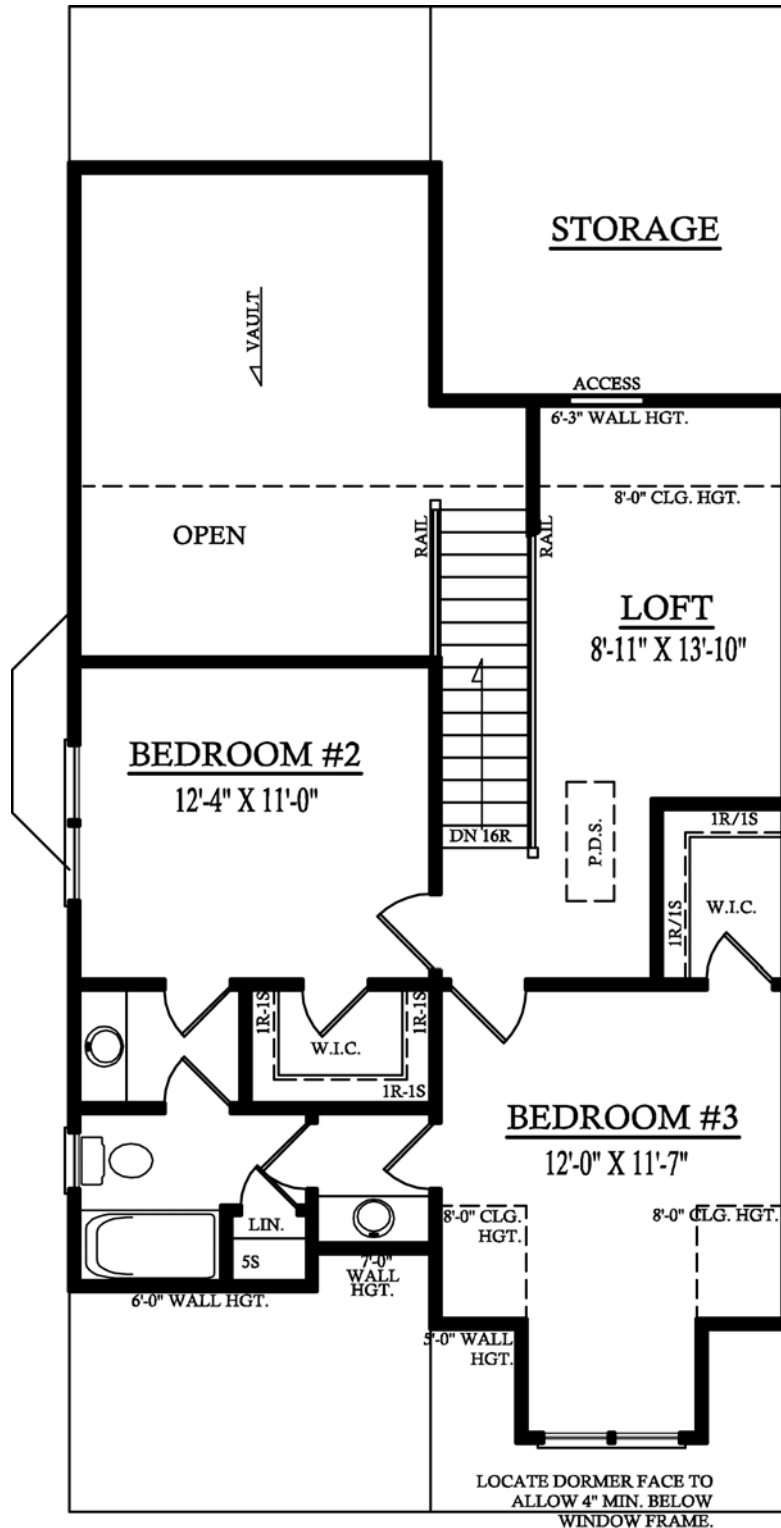


Napa (8)
VALLEY CREST TOWNES



Napa (8)
VALLEY CREST TOWNES

FIRST FLOOR PLAN
9'-0" CLG. HGT. U.N.O.
SET WINDOWS @ 7'-10" U.N.O.



Napa (8)
VALLEY CREST TOWNES

SECOND FLOOR PLAN

8'-0" CLG. HGT. U.N.O.
SET WINDOWS @ 6'-8" U.N.O.